



MX92 motorline PROFESSIONAL

USER / INSTALLER MANUAL



Correct disposal of this product
(Electrical and electronic equip-
ment waste).

EN

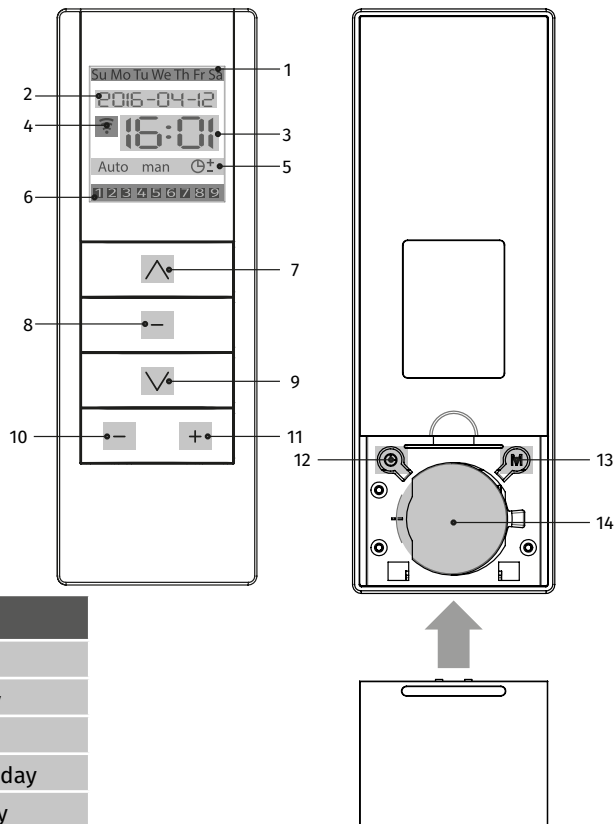


V1.0
REV. 06/2016

Technical characteristics

• Power Supply	3V(CR2430)
• Working temperature	-20 to 55°C
• Transmission frequency	433MHz
• Range	40m
• Number of channels	8
• Code type	Rolling Code
• Dimensions	45x130x12mm

1	Week days
2	Current date
3	Current hour
4	Signal transmission
5	Programming modes
6	Channel
7	Up
8	Confirm/Stop
9	Down
10	Return
11	Advance
12	Time
13	Select
14	Battery



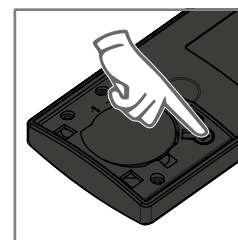
DESCRIPTION:

man • manual	Su • Sunday
auto • automatic	Mo • Monday
• random	Tu • Tuesday
	We • Wednesday
	Th • Thursday
	Fr • Friday
	Sa • Saturday

PRE-PROGRAMMING

- When a battery is placed on the transmitter, this turns on all the characters on the display for 2 seconds
- If more than 10 seconds passes without pressing any key, the remote automatically exits programming and returns to standby mode, without record any change.
- Factory values:
 - the display shows initially: wednesday, 2014-01-01, 00:00h.
 - manual mode active.
 - Group 1 has the channels 1, 3, 5 e 7 memorized.
 - Group 2 has the channels 2, 4, 6 e 8 memorized.

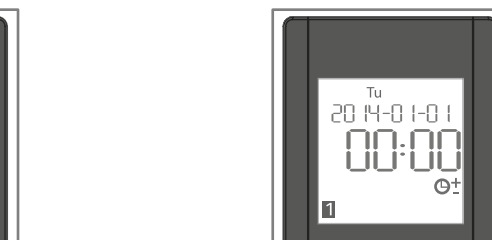
CONTROL OPTIONS



- Use **M** to scroll through the different controls.



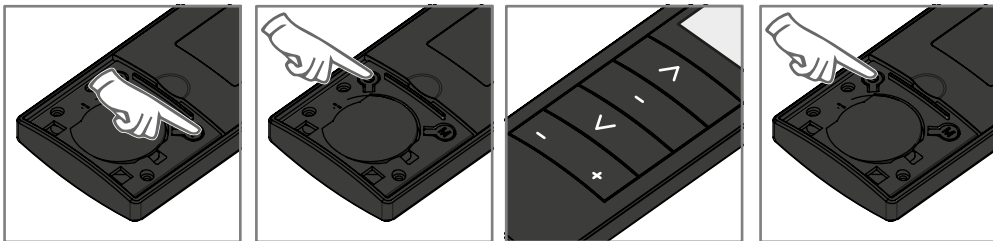
- **MANUAL CONTROL (man)**
No timer function.



- **CONTROL AUTOMATIC (auto)**
With timer function.

- **RANDOM CONTROL (⊕±)**
With random timing function. The random remote control is implemented in accordance with Standard timing (approx. 15 min.).

SET CURRENT DATE AND TIME



1 • Press M until the remote control is in manual mode.

2 • Press \oplus for 3 seconds and the year will flash.

3 • Use the - and + to scroll through the various values that define the date / time and the \wedge \vee keys to change each value.

4 • In the end, press the \oplus button to confirm.

TRANSMISSION SIGNAL



Each time you press \wedge \vee , the display will show Wi-Fi in dynamic mode, indicating the signal sending. The signal goes off when you stop pressing the button.

CHOOSE CHANNEL / GROUP



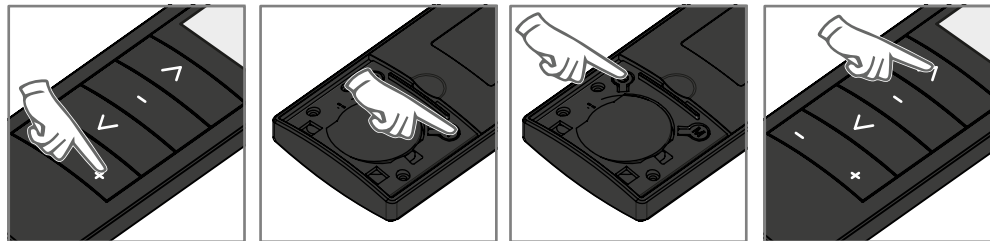
The display always shows what the channel functions.

When you press \wedge \vee an order will be transmitted by the indicated channel at the bottom of the display.

In automatic or random mode, use - and + to select the group 1 or group 2. Press \oplus for 3 seconds to enter the selected group. Use - and + to select channels. To set a channel in the group, press \wedge once. To remove it from the group, press \vee once. When the number is flashing, it means that does not yet belong to the group. When the number is fixed, it belongs to the group.



PROGRAMMING TIMER

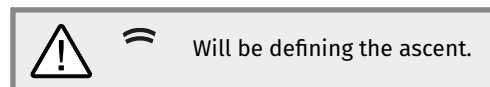
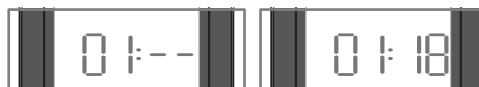


1 • Select the channel you want using the buttons - and +.

2 • Press M until if you put in automatic mode (auto).

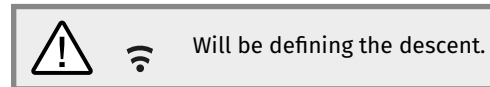
3 • Press \oplus for 3 seconds. The Su will flash and the zone of the time will appear empty.

4 • Using \wedge \vee , select the day you want to program.



5 • Press + to now set the time and use \wedge \vee to change it.

6 • Press again + to set the minutes and use \wedge \vee to change them.



NOTE • When you end the ascent and descent programming, the system automatically advances to the next day. If you want to quit programming press \oplus for 3 seconds.



- The 3V lithium battery (CR2430) should be replaced once a year to ensure the correct operation of the transmitter;
- To replace the dead battery remove the plastic cover, remove the battery out and insert the new one, respecting the polarity shown on the container;
- The used battery must be placed in containers intended for this purpose.