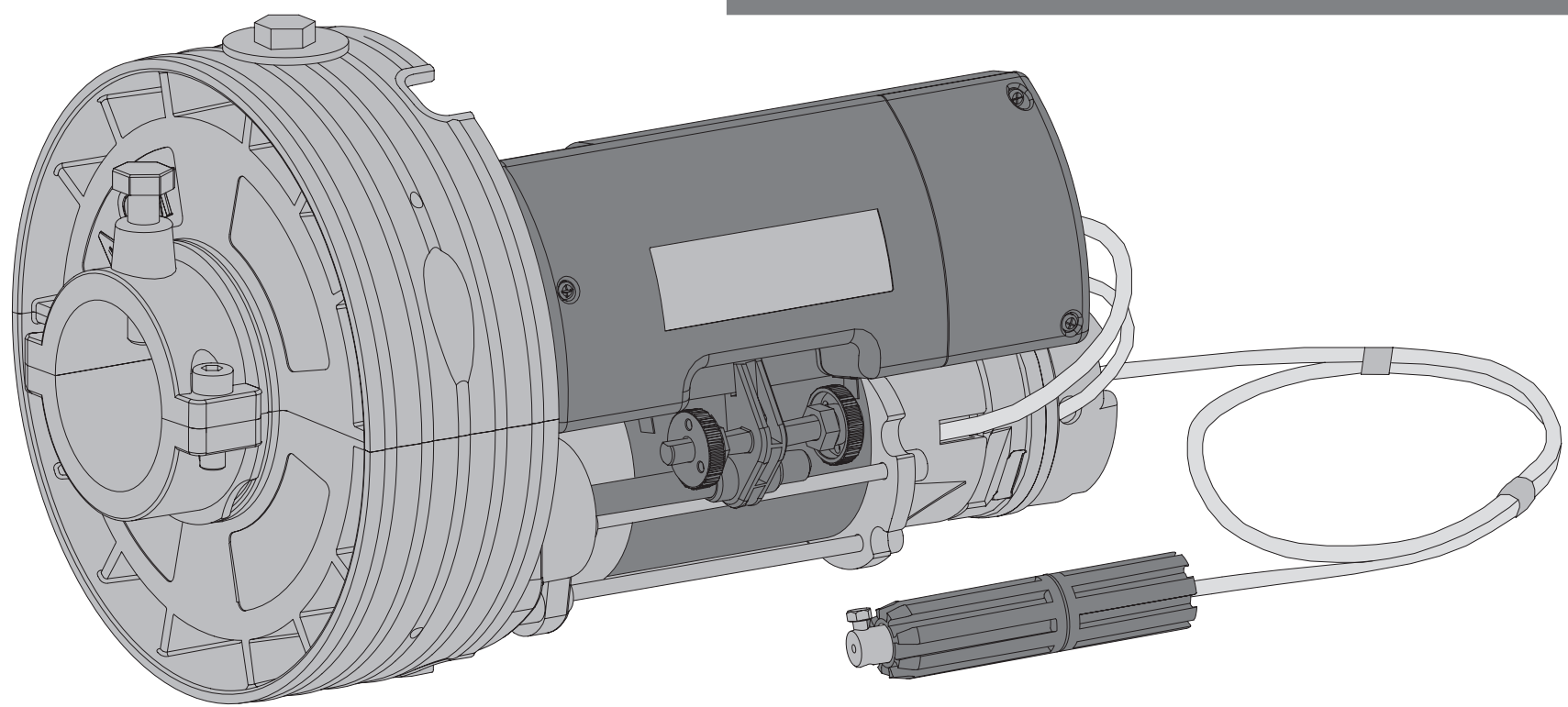




ROLLING | ROLLING SP

USER'S AND INSTALLER'S MANUAL



00. CONTENT

INDEX

01. SAFETY INSTRUCTIONS

STANDARDS TO FOLLOW _____ 1B

02. THE AUTOMATISM

TECHNICAL SPECIFICATIONS _____ 2A

INSTALLATION INSTRUCTIONS _____ 2B

INSTALLATION OF THE ELECTROBRAKE _____ 4B

GEAR MOTOR WITH SAFETY DEVICE _____ 5A

01. SAFETY INSTRUCTIONS

STANDARDS TO FOLLOW

ATTENTION:

- To ensure the safety of people, it is important that you read all the following instructions. Incorrect installation or incorrect use of the product can cause physical injury and material damage.
- Keep these instructions in a safe place for future reference.
- This product was designed and produced strictly for the use indicated in this manual. Any other use, not expressly indicated here, could compromise the good condition/operation of the product and/or be a source of danger.
- ELECTROCELOS SA is not responsible for the improper use of the product, or other use than that for which it was designed.
- ELECTROCELOS SA is not responsible if safety standards were not taken into account when installing the equipment, or for any deformation that may occur to it.
- ELECTROCELOS SA is not responsible for the safety and proper operation when using components not sold by them.
- Do not make any modifications to the operator components and / or their accessories.
- Before installation unplug the automatism from the source of power.
- The installer must inform the client how to handle the product in case of emergency and provide this manual to user.
- Keep remote controls away from children, to prevent the automated system from being activated involuntarily.
- The customer shall not, under any circumstances, attempt to repair or tune the operator. Must call qualified technician only.
- Connect the automatism to a 230V plug with ground wire.
- Operator for indoor use.
- Do not install the gearmotor in presence of fumes or inflammable gas.
- The mechanical parts must conform to the provisions of standard EN 12604 and EN 12605.
- The installation must conform to standards EN 12453 and EN 12445.
- The main power supply of the automated system must be fitted with an all-pole switch with contact opening distance of 3mm. Use of a 6 A thermal breaker with all-pole circuit break is recommended.
- The safety devices (photocells , etc.) protect any danger areas against mechanical movement risks, such as crushing, dragging, and shearing.
- Use of at least one indicator-light is recommended for every system, as well as a warning sign, in addition to the safety devices.
- Do not command more than one gearmotor with each button.

01. SAFETY INSTRUCTIONS

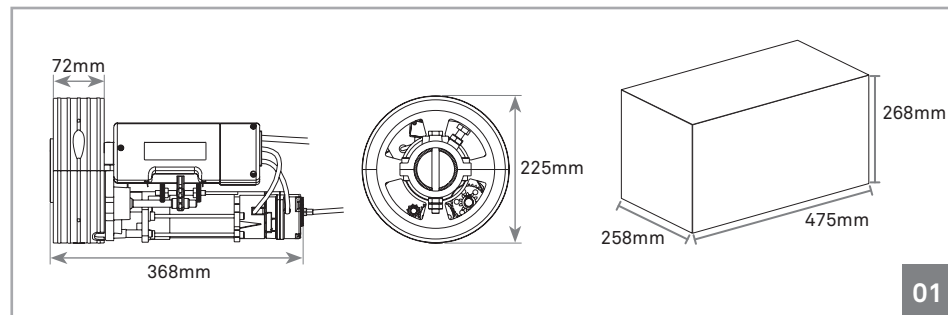
STANDARDS TO FOLLOW

- Do not allow children or adults to stay near the product while it is operating.
- Transit is permitted only when the automated system is fully opened.
- Maintenance: check at least every 6 months the efficiency of the system.
- Anything not expressly specified in these instructions is not permitted.

02. THE AUTOMATISM

TECHNICAL SPECIFICATIONS

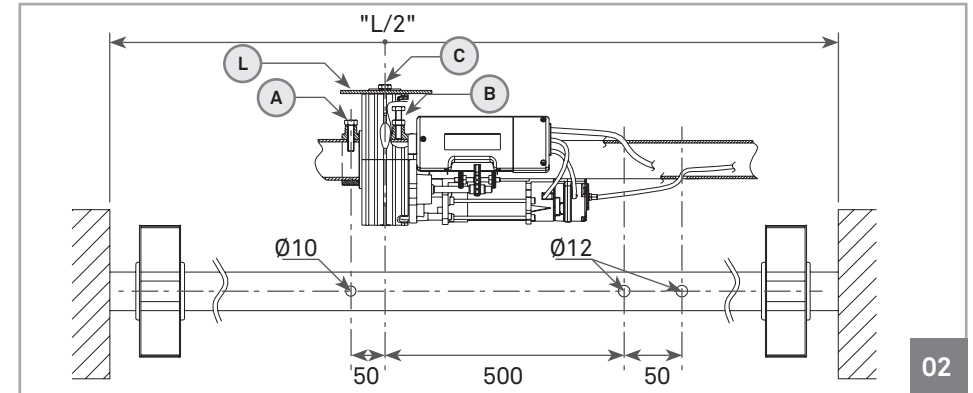
	ROLLING 120 120SP	ROLLING 160 160SP	ROLLING 360 360SP	ROLLING380
Torque	120Nm	155Nm	420Nm	450Nm
Lifts	120Kg	160Kg	360Kg	380Kg
Maximum height	6m	6m	6m	6m
RPM	10	10	8	8
Capacitor	16µF	20µF	20µF (x2)	20µF (x2)
Power supply	230V 50/60Hz	230V 50/60Hz	230V 50/60Hz	230V 50/60Hz
Consumption	2,2A	2,7A	5,4A	5,8A
Power	460W	630W	1260W	1330W
Thermal protection	4min	4min	4min	4min
Weight	7 kg	8 kg	16 kg	17 kg



01

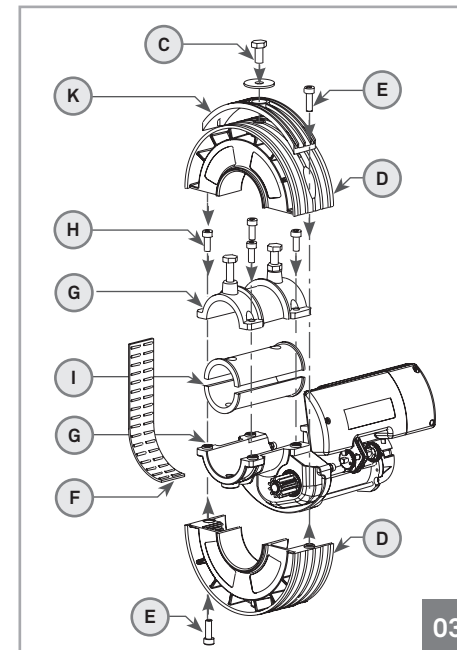
02. THE AUTOMATISM

INSTALLATION INSTRUCTIONS



02

- 01 • Close the rolling shutter.
- 02 • Make 3 holes in the shutter's tube as shown in image 02.
- 03 • Remove the M10 screw (C) from the crown of the gearmotor (figure 03).



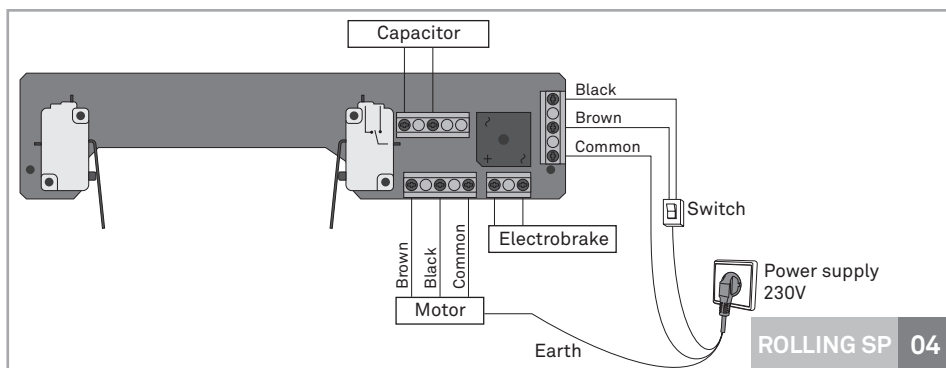
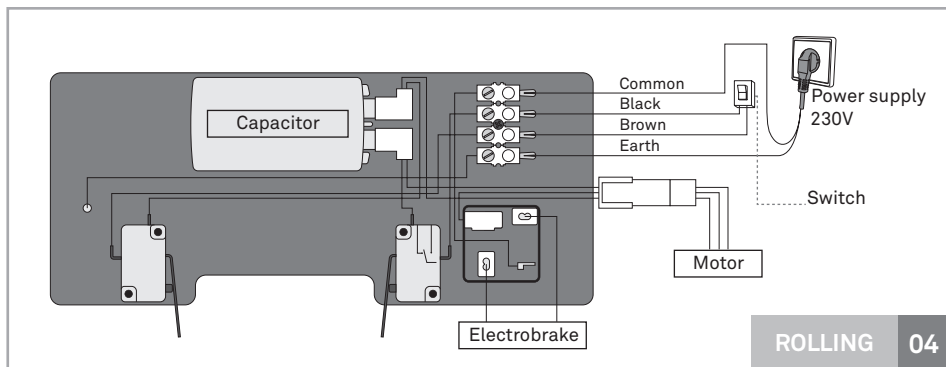
03

- 04 • Remove the two semi-crown (D) unscrewing the two M8 screws (E) as shown in figure 03.
- 05 • Carefully remove the plastic band with rolls (F) avoiding heavy folds that would cause the spillage of the rolls.
- 06 • Separate the two elements of the gearmotor (G) unscrewing the four M8 screws (H).
- 07 • In case the diameter of the tube is inferior to 60mm, use the reductions Ø33 / Ø42 / Ø48 (I) positioning them on the 10mm hole drilled previously (figure 02).
- 08 • Assemble on the tube of the shutter the two elements of the gearmotor (G) using the four M8 screws (H) removed before.
- 09 • Fasten the M10 screw (A) without hexagon nut, screwing it inside the hole 10mm (figure 02).

02. THE AUTOMATISM

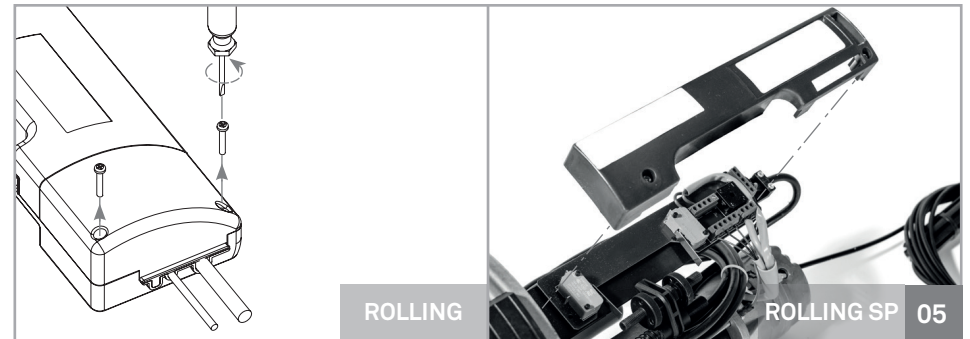
INSTALLATION INSTRUCTIONS

- 10 • Tighten the M10 screw with nut (B) in order to block the gearmotor on the shaft.
- 11 • Install the plastic band with rolls (F) in its appropriate place.
- 12 • Install the two semi-crown (D) fixing them with the two M8 screws (E). In presence of spring boxes diameter 220 mms use the adapter (K) (figure 03).
- 13 • Make 12 mm hole in the last element of the shutter (L), aligned with the M10 hole existing on the crown motor.
- 14 • Place the last element of the shutter on the motor and secure it through the screw M10 (C) with washer (figure 03).



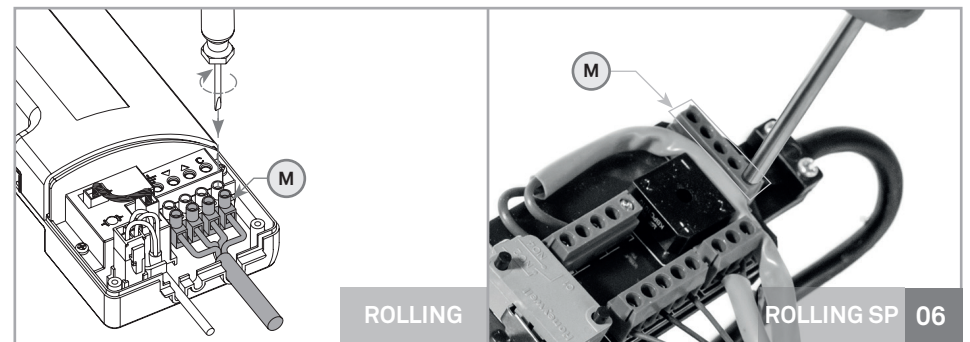
02. THE AUTOMATISM

INSTALLATION INSTRUCTIONS



- 15 • Remove the limit-switch board's cover.

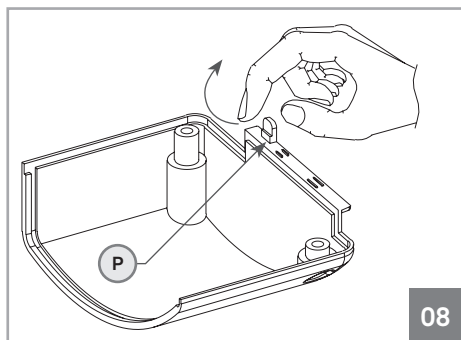
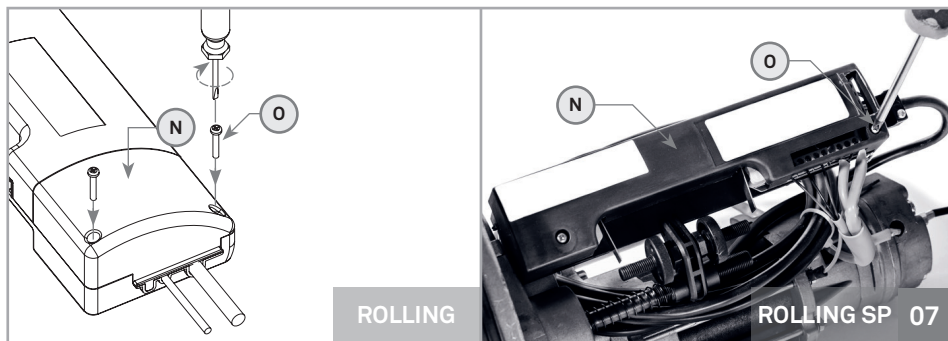
- 16 • Make the electrical connections as shown in figure 04 passing the 4x1mm cable supplied, inside the shutter shaft avoiding any contact with the rotating parts (figure 02). In presence of motor with electrobrake, insert the sheath of the brake inside the other hole $\varnothing 12$.



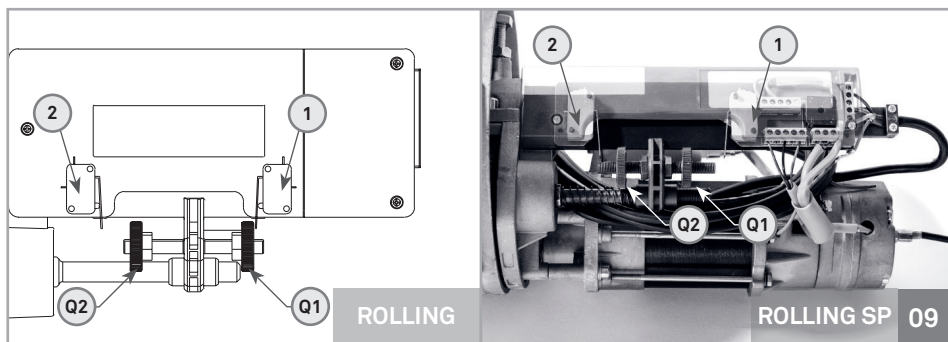
- 17 • Connect the terminal block (M) of the power wire to the limit switch respecting the right direction (figure 06). Fasten the terminal block through the four screws.

02. THE AUTOMATISM

INSTALLATION INSTRUCTIONS



18 • Close the limit switch through the plastic cover (N) and then fasten with the two screws (O), checking the correct disposition of the cables (figure 07). In presence of motor with electrobrake, remove the pin (P) on the plastic cover (figure 08).



19 • After having installed the mechanical parts and electrical connections, proceed to the regulation of the limit-switches as shown in figure 09.

02. THE AUTOMATISM

INSTALLATION INSTRUCTIONS

20 • Rotate the plastic washer (Q1) by hand until you hear the click of the microswitch 1 (down regulation completed).

21 • Rotate the other plastic washer (Q2) towards the microswitch 2 (up). Give tension to the motor through an electric command and verify if the shutter, climbing, stops in desired point. Adjustments of the position can be effected acting always on the same plastic washer and operating through electric command.

22 • Should the shutter need to be installed contrary to the description in figure 02, the steps described above should be carried out to the contrary as microswitch 2 will stop the closing and microswitch 1 will stop the opening.

23 • Fasten the counternuts after adjusting the limit-switch washers.

INSTALLATION OF THE ELECTROBRAKE

01 • Insert the brake (R) on the back of the electrical motor as shown in figure 10.

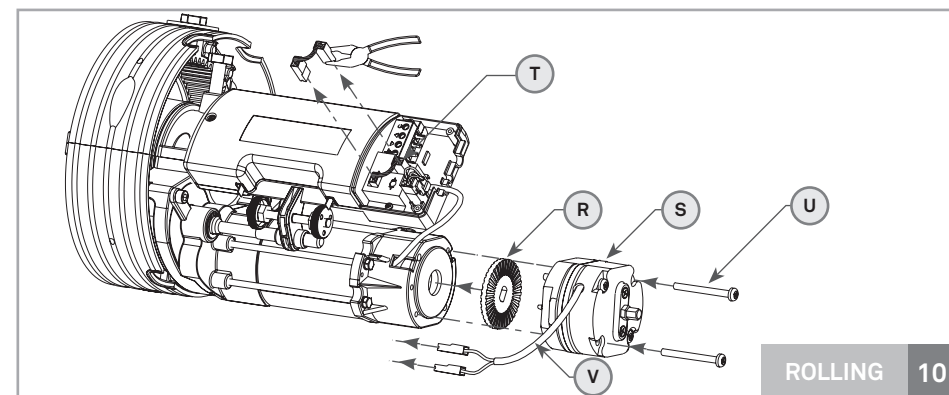
02 • Fixing the electrobrake (S) to the motor using the screws M5x50 (U).

03 • Remove the bridge (T) from the limit switch.
Do not damage the bridge pulling on the wire and keep it for future use.

04 • Connect the electric cables (V) of the brake to the terminal of the limit switch.

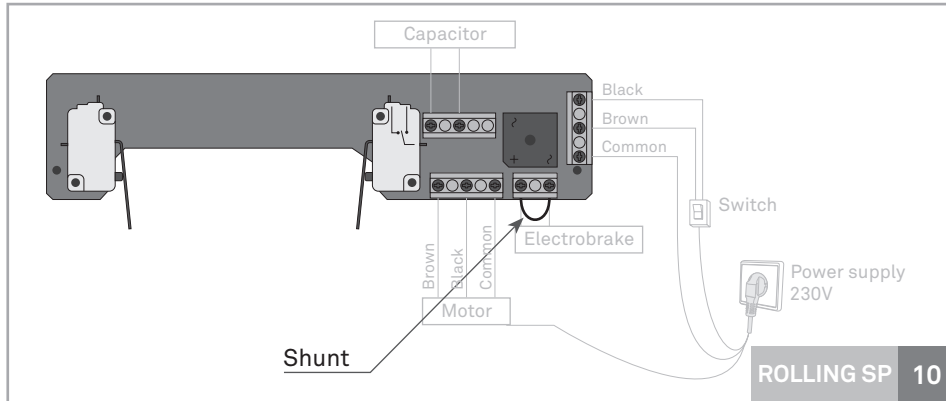
05 • Close the limit switch using the plastic cover (N) (figure 07).

Note • In Rolling SP, please see image 10 of next page.



02. THE AUTOMATISM

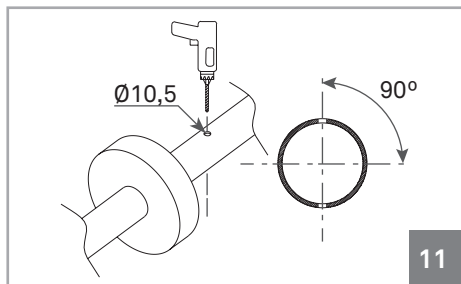
INSTALLATION OF THE ELECTROBRAKE



Note • When installing the electrobrake on Rolling SP, remove the shunt visible on image 10 and make the connections of the electrobrake as visible on image 04.

GEAR MOTOR WITH SAFETY DEVICE

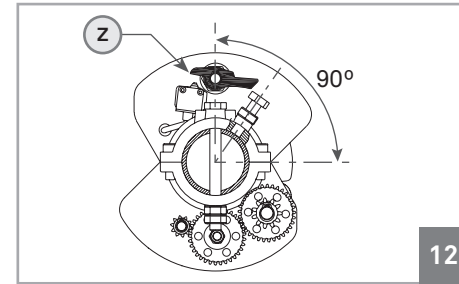
Gear motor with safety device carried out to stop the free fall of roller shutters and at the same time, in microswitch versions, to interrupt the motoreductor's feeding.



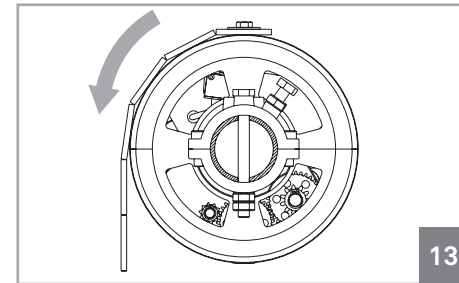
01 • Effect on the tube of the shutter a passing perforation $\varnothing 10$ perpendicular to the axis (figure 11).

02. THE AUTOMATISM

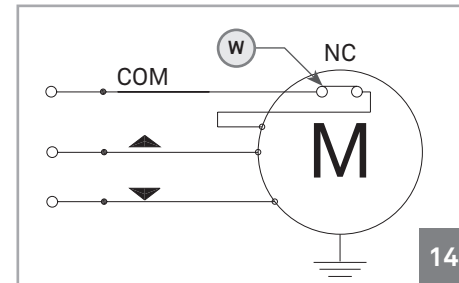
GEAR MOTOR WITH SAFETY DEVICE



02 • After assembled the two elements of the gearmotor (G), check that the pawl (Z) is in the highest position perpendicular to the rolling shutter axis (figure 12).



03 • The downward run of the roller shutter shall be consistent with the downward run of the safety brake. Place the gear motor as shown in 13.



04 • For microswitch versions, connect the micro switch's cable (W) in series to the feeding cable (common) of the gearmotor (figure 14).